

MERCER ISLAND SEMI CUSTOM

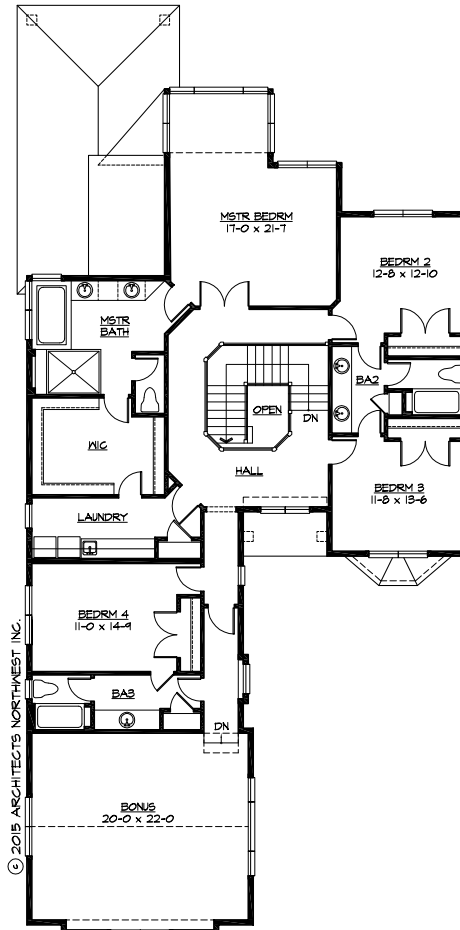
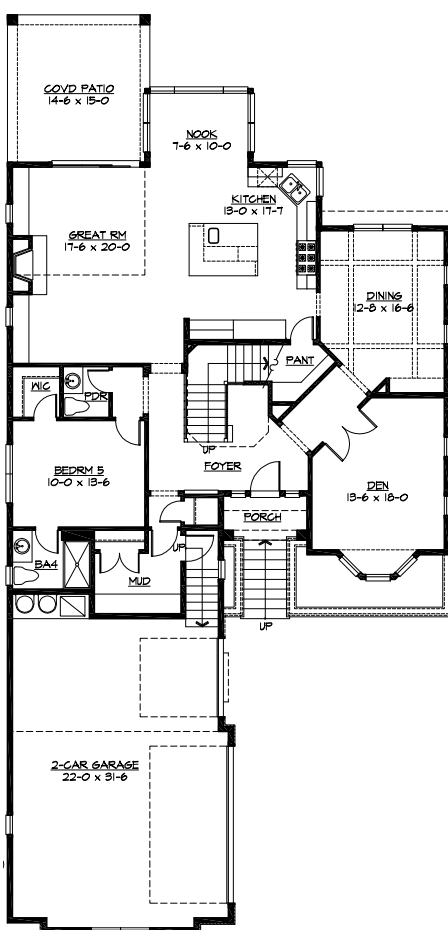


8885 SE 36th Street
Mercer Island, Washington 98040

PLAN NAME.	Mercer Is. Semi-Custom
SIZE.	4,239 Total Living Sf.
BEDS / BATHS.	5 Beds / 5 Baths
PRICE.	TBD
STATUS.	Available
LOT.	11,393 sf Lot Size

MAIN LEVEL

UPPER LEVEL



This Steve Jensen Semi-Custom is a spectacular 2-story Northwest Traditional featuring over 4,200 sf. of living space with 5 bedrooms and 5 baths. Bedroom 5 can function as a guest suite with it's own 3/4 bath and mini walk-in closet. The upper level offers 4 bedrooms and a generous bonus room space at the front of the home. The luxurious master suite is appointed with wrap around windows in the sitting area, 5-piece bath and a pass through walk-in closet with access to the laundry facilities.

STEVEJENSENHOMES.COM

Continuing a policy for constant improvement, builder reserves the right to change features, brand names, dimensions, architectural details and designs. This brochure is for illustrative purposes and drawings are not to scale. This is not part of a legal contract. Prices are subject to change without notice.



FOR SALES INFORMATION

Steve Jensen [253] 891-8020
sales@stevejensenhomes.com

Courtesy to Brokers